



The RGS Mail Xtra

September 2018

Dear Families, Students and Old Scholars

Welcome back!

At the start of this new academic year, I would first of all like to thank you for all of your support over last year which has made it possible for our students to succeed in so many ways, not least in public examinations. Please read our website blog for details of our excellent A level and GCSE results and of the excellent individual performances of Year 11 and Year 13 students. We are delighted to welcome back many of our Year 11 students into Sixth Form and also extremely pleased that all of our Year 13 students were able to progress on to their chosen pathway, whether that be employment, further education or higher education, after leaving Ramsey Grammar School.

If you visit the school you will notice the building works being undertaken here to improve facilities for our Sixth Form students. Although it is always somewhat inconvenient to work alongside a building site, I would like to reassure you that this is only for the short term and that we can look forward to an excellent new facility for our students which will give them the space and appropriate environment in which to study. You will also notice that the works along Lezayre Road and on the East carpark are now complete and we are very grateful to everyone involved in this for completing these challenging projects in a relatively short space of time.

As we are starting the new academic year, I would like to draw your attention in particular to our revised Mobile Phone Use Protocol in this edition of RGS Mail. You may have noticed in the press that two secondary schools on the island are undertaking a partial or total ban on mobile phone use in school. We have decided not to do this and to place responsibility for acceptable use of mobile phones on our students. The feeling of staff and students when we consulted them year was that the benefits of mobile phones and digital technologies outweighed the problems which we all know they can cause.

We ask you to read through the protocol carefully and to discuss it with your child to ensure full understanding of all of its implications. We sincerely hope that the students react positively to our decision to allow mobile phones to be brought into school. We do of course withhold the right to change the policy if it appears not be working. We will review the way the new protocol is operating at the end of this half term.

Also in this edition of RGS Mail, is our new Programme for 2018/19 for the Northern Theatre Experience at Ramsey Grammar School. You will see that we have an exciting and varied programme for this year, including West End musicals as well as some of our more traditional offerings. The 'King and I' has sold out in Douglas so we would urge you to get your tickets for the showing here on Thursday 29th November whilst they are still available. Please remember to book directly via the links to Live Screening on the school website.

I take this opportunity to welcome the new staff at RGS:

Miss B Brown, Teacher of Social Science
Mr G Bonner, Teacher of English and History
Mr D Foley, Teacher of Social Science
Mr D Pilkington, Teacher of Maths
Miss S Tedds, Teacher of English and History
Mrs K Murphy, Teacher of RE
Mr C Reynolds, Teacher of Science

Finally, I would like to give you advance notice of our annual prizegiving ceremony which takes place on Thursday 11th October. I look forward to rewarding the outstanding achievements of our students and to seeing many of you there on that evening of celebration.

A handwritten signature in blue ink that reads "Annette Baker". The signature is written in a cursive style with a long, sweeping underline.

Mrs A G Baker
Headteacher

Mobile Phones and Electronic Devices Protocol

Purpose

The widespread ownership of mobile phones among young people requires that teachers, school administrators, students, parents and carers take steps to ensure that mobile phones are used responsibly at school. This Protocol is designed to ensure that potential issues involving mobile phones can be clearly identified and addressed ensuring that the benefits that mobile phones provide (such as increased safety) can continue to be enjoyed by our students.

Rationale

The school recognises that personal communication through mobile technologies is an accepted part of everyday life, but that such technologies need to be used well.

Responsibility

It is the responsibility of students who bring mobile phones to school to abide by the guidelines outlined below. The decision to provide a mobile phone to their children should be made by parents or carers. It is incumbent upon parents/carers to understand the capabilities of the phone and the potential use/misuse of those capabilities. Parents/Carers should be aware that the school cannot accept responsibility for any loss, damage or costs incurred due to its use.

The school office remains the most appropriate point of contact for parents/carers for matters concerning their child during school time.

Code of Conduct for using Mobile Phones in School

1. Mobile Phones should be switched off and kept out of sight during lessons and whilst moving between lessons.
2. Students should not use their mobile phones at any time on the school corridors, in the lunch queue or in the school canteen.
3. Mobile Phones should not be used in any manner or place which is disruptive of the normal routine of the school.
4. At the discretion of the individual classroom teacher, mobile phones and electronic devices may be used as an aid to learning. It is for the individual teacher to make clear what acceptable use is in any particular lesson.
5. Headphones or earphones may be used for the purpose of learning in subjects such as Music or Modern Foreign Languages and by Sixth Form students during private study. Otherwise, headphones should not be worn in school.

Unacceptable Uses

1. Unless express permission is granted, mobile phones should not be used to make calls, send text messages, take photos or use any other application during lesson time except at the discretion of the teacher.
2. Using mobile phones and their applications to bully, threaten or humiliate other students is unacceptable. It is a criminal offence to use a mobile phone to menace, harass or offend another person. Please note that almost all calls, text messages and emails can be traced.
3. Under JCQ Regulations, mobile phones are banned from all examinations. Students MUST hand phones to invigilators before entering the exam hall.

Easter Ski Trip 2019

6th - 13th April 2019

First week of Easter Holidays

**Flying from
IOM to Austria**

**Resort - Ehrwald
Hotel - Sonnenburg**



Trip Inclusions

***Return flights from Isle of Man**

***7 nights Half Board accommodation**

***6 days lift pass**

***6 days x 4 hours ski lessons**

***6 days ski, boot & helmet hire**

***Selection of evening activities**

***Comprehensive travel insurance**

***Baggage carriage**

**Cost
£999**

**Deposit
£200**



**Interested?
See Mr Lillie
for a letter**



Ramsey Grammar School
Scoill Ghrammeydys Rhumsaa

RAMSEY
Isle of Man
IM8 2RG

Headteacher

Ardynseyder

A G Baker M Ed NPQH

Telephone: 01624 811100

Fax: 01624 811101

E Mail:
enquiries@rgs.sch.im

Dear Parent / Carer,

Easter Ski Trip 2019 – Saturday 6th April – Saturday
13th April 2019 – Ehrwald, Austria

*******Flight from the Isle of Man to UK and then flight on to Austria*******

For the next Easter Ski Trip for 2019 I have successfully negotiated a great deal, allowing us once again, to fly from the Isle of Man to the UK and then onto Austria.

We will be travelling to the beautiful Austrian resort of Ehrwald - in a fantastic location just over 1hr NW of Innsbruck, close to the famous Zugspitze Glacier, which borders Bavaria. The Hotel Sonnenburg sits on the Ehrwald slopes and is just a 5-10 minute walk from the centre. It is a superb resort offering guaranteed snow and no less than 213kms of piste. Fantastic for all grades of skier with 74 blue, 55 red & 11 black runs.

Ski Trip Inclusions:-

- > Return flights from the Isle of Man > 7 night's Half Board accommodation (daily lunch to be bought)
- > 6 day lift pass > 6 day ski & boot hire
- > 6 day helmet hire > A selection of evening activities
- > Comprehensive ski travel insurance > Bag carriage

The cost of the trip is **£999**. If you would like to secure a place on this trip, please complete and return the slip below along with a deposit of **£199**, cheques payable to **Ramsey Grammar School, as soon as possible to avoid disappointment**. Deposits are non-refundable in the event of your cancellation. Full trip payment should be made by January 2019, following the suggested monthly payment schedule as outlined below

September (Deposit)	£199.00
October 26 th	£200.00
November 30 th	£200.00
December 21 st	£200.00
January 25 th	£200.00

Due to the success of previous trips, I anticipate participation numbers to rise, therefore I would ask you to act fast and I look forward to welcoming your child onto the 2019 ski trip.

Yours sincerely



Mr D J Lillie (Ski Trip Leader)

"-----"

Easter Ski Trip 2019 – Saturday 6th April – Saturday 13th April 2019 –

Austria

I would like to secure a place on the Easter Ski Trip 2019.

I include a deposit of **£199**, non-refundable in the event of my cancellation. I agree full balance by January 2019, following the suggested monthly payment schedule.

Student Name _____ Form _____

Parent / Carer Signature _____ Date _____

IMPORTANT NOTICES

Dropping Off and Picking Up Students at the Start and End of the School Day

Would parents please note that students must not be dropped off or picked up within the school grounds as this causes a significant safety issue.

The lay-by on Lezayre Road outside the East Building may be used or other safe places away from school entrances. Please also remind students that the foot-bridge should be used to cross Lezayre Road.

Every year we have to dispose of a vast quantity of lost property, most of it good quality but none of it named or identifiable. We will do our best to return named items to owners so please ensure that coats, bags, sports kit etc is clearly marked.

If you have not already signed up for ParentPay why not do so now? ParentPay is currently used for topping up lunch cards but we hope to extend use to trip payments in the near future. For more information or to sign up, please contact the school via enquiries@rgs.sch.im

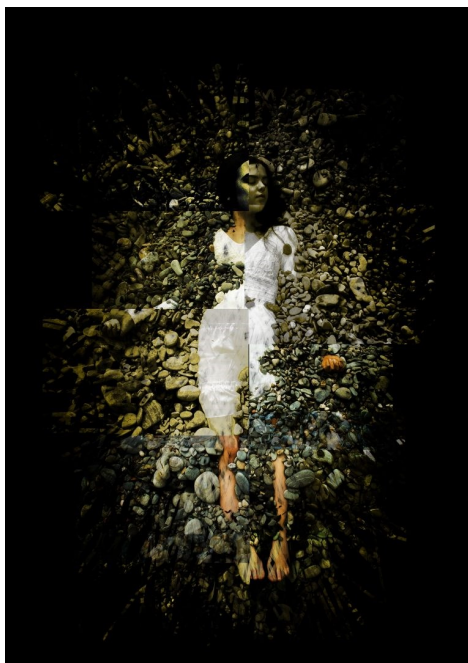
Sovereign Arts Foundation—Isle of Man Student Prize

We are delighted that 3 students from Ramsey Grammar School, Arabella Maiden, Olivia Valerga, and Charlotte Kinnin, have been shortlisted for the Sovereign Arts Foundation Student prize. Arabella and Olivia study art here at RGS and Charlotte studies at QEII. Although a former RGS student, Charlotte followed the Art course at QEII as part of our highly successful collaboration with QEII and Castle Rushen High School. We are delighted, both for RGS and for the collaboration, that our students have been shortlisted for such a prestigious prize.

All of the finalists' pieces can be viewed at the Sayle Gallery or online and voted for by following the link below and, of course we wish Arabella, Olivia and Charlotte and of course all of the Finalists, the very best of luck!



Artist Name: Olivia Valerga **Age:** 18
Artwork Name: Evolution



Artist Name: Arabella Maiden **Age:** 18
Artwork Name: Earth (Part 1 of the Elements' Series)



Artist Name: Charlotte Kinnin **Age:** 18
Artwork Name: Fractured Beginnings |

Follow the link below to vote for your favourite:

[/www.sovereignartfoundation.com/prize/isle-man-students-prize/](http://www.sovereignartfoundation.com/prize/isle-man-students-prize/)

ARTS TEAM IN QUEEN TRIBUTE



**We are delighted to announce
that the school show this year
will be the fantastic musical
'We Will Rock You'
in the West Hall on
24th, 25th, and 26th October
2018**



Set in the year 2300, live music has been banned from the Planet Mall. Everyone wears the same clothes, thinks the

same thoughts and goes about in a brain-dead gag-ga haze. A bunch of Bohemians are looking for the 'Rhapsody' in the rocky rubble of Tottenham Court Tube Station. With the help of Pop, an ancient hippie librarian, who is researching secret history through old copies of NME (New Musical Express), two soul rebels, Galileo and Scaramouche, find Rock's Holy Grail, Brian May's guitar buried in the remains of Embley Stadium.

Tickets available soon.

'A JOYOUS, LIFE-AFFIRMING BILLY ELLIOT'



THE TIMES | FINANCIAL TIMES | THE INDEPENDENT | TIME OUT



THE INDEPENDENT | THE STAGE | WHATSONSTAGE | LONDON THEATRE | ATTITUDE

EVERYBODY'S TALKING ABOUT

JAMIE

By DAN GILLESPIE SELLS and TOM MACRAE | Directed by JONATHAN BUTTERELL



WINNER!
BEST MUSICAL

BROADCAST LIVE TO CINEMAS
FROM THE APOLLO THEATRE, LONDON - THURSDAY 5 JULY, 7.20PM

TICKETS ON SALE NOW
JamieInCinemas.com

NIMAX

MORE SCREEN

EVERYBODY'S TALKING ABOUT

JAMIE

Supported by his brilliant loving mum and surrounded by his friends, Jamie overcomes prejudice, beats the bullies and steps out of the darkness, into the spotlight.



BOOK YOUR TICKETS NOW

<https://rgstheatre.ticketsolve.com/shows>

Thursday 4th October—7.30 pm





LIVE THEATRE SCREENING AT RAMSEY GRAMMAR SCHOOL 2018/2019

'The West End comes to the West Building!'

Date	Production	Company	Time*
Wednesday 12 th September	<i>Merry Wives of Windsor</i>	RSC	7.00 pm
Thursday 27 th September	<i>King Lear</i>	NTL	7.00 pm
Thursday 4 th October	<i>Everybody's Talking About Jamie**</i>	AT	7.30 pm
Monday 15 th October	<i>Mayerling</i>	RB	7.15 pm
Wednesday 14 th November	<i>Troilus and Cressida</i>	RSC	7.00 pm
Thursday 8 th November	<i>Allelujah!**</i>	NTL	7.00 pm
Tuesday 20 th November	<i>The Madness of George III</i>	NTL***	7.00 pm
Thursday 29 th November	<i>The King and I **</i>	LP	7.00 pm
Monday 3 rd December	<i>The Nutcracker</i>	RB	7.15 pm
Thursday 13 th December	<i>Anthony and Cleopatra</i>	NTL	7.00 pm
Tuesday 22 nd January 2019	<i>The Queen of Spades</i>	RO	6.45 pm
Wednesday 30 th January	<i>La Traviata</i>	RO	6.45 pm
Thursday 7 th February	<i>I'm Not Running**</i>	NTL	7.00 pm
Tuesday 26 th February	<i>Don Quixote**</i>	RB	7.00 pm
Tuesday 2 nd April	<i>La Forza Del Destino</i>	RO	6.15 pm
Tuesday 30 th April	<i>Faust</i>	RO	6.45 pm
Tuesday 11 th June	<i>Romeo and Juliet</i>	RB	7.00 pm



www.ramseygrammarschool.im (follow links to Live Screening)

The Welcome Centre

Ticket Hotline: 600555

Key:

NTL = National Theatre Live

RSC = Royal Shakespeare Company

ROH = Royal Opera House

RB = Royal Ballet

AT = Apollo Theatre

LP = London Palladium

*Doors open 30 minutes prior to all performances

**All screenings are live apart from *Everybody's Talking About Jamie*, *Allelujah*, *I'm Not Running* and *Don Quixote* which are Encore screenings.



Find us on:
facebook

rgstheatre

KS3 Homework

During last year subject teams reviewed the effectiveness of homework that is given to support learning in the classroom. This year our subject teams will be trialling some different approaches to learning beyond the classroom and we will be surveying the views of students during the year. Based on feedback received we will rewrite and publish a new homework or learning beyond the classroom policy in the Summer term. If you have any views on the subject or feedback during the year, please contact Mr. Corrin via enquiries@rgs.sch.im.

Below is an example of the approach that the Geography team developed and introduced to students for this term.

Geography Department Update.

I would like to take this opportunity at the start of the year to let you know about the exciting new approach to homework within Key Stage 3 Geography.

Our aim is to decrease the frequency but increase the quality of homework completed by our students. Each topic has a takeaway menu of 16 assignments (see below for this terms' menu).

Geography Take Away Homework –Maps & IOM



 Choose your homework from the menu below: The Peri-ometer shows the level of difficulty or challenge.			
Write an interview with either Peters OR Mercator about their map projection with questions & answers about him, description of his projection, why his is best & include an image.	Design a leaflet to explain how to obtain a 4 and 6 figure grid reference and how to use them to explain where places are on a map.	Write a short children's book for 5-7 year olds about the Isle of Man. Include information about the landscape, settlements, myths and legends etc. What makes the IOM unique?	Create a board game that shows the landmarks and famous features of the Isle of Man.
Design a treasure map with instructions to find your hidden treasure. Make sure that your treasure solution is a six-figure grid reference.	Write a short story using map symbols instead of words. On the back of your work reveal the answers to your story. E.g. Sarah walked to the P after Sch. You can get all the map symbols from http://www.ordnancesurvey.co.uk/docs/legends/50K-raster-legend.pdf	Research the difference between a physical map, a political map and an Ordnance Survey map. Write a paragraph that compares and contrasts the different maps. Make your work even better by including a small example of each type of map.	Create a video tutorial explaining what an OS map is and how to read a map using symbols, Grid references, Contour Lines and Scale.
Produce a leaflet including the following: A description of why maps are useful, what types of jobs use maps. Identify basic map features (contours, spot height, etc). Identify basic map symbols (viewpoint).	Design a map of a Theme Park using symbols to show key locations. A Key must be included. Present your work on plain paper. Draw in pencil then add colour. You must include a title for your work.	Draw a sketch map of your journey to school. Use a key to show the different features along your route.	Use 'Kahoot' to create a quiz of 10-20 questions about this topic. Email the link to your teacher when you have completed it.
Design a map of the school that new Year 7s could use. Remember to use symbols, (e.g. numbers for classrooms) and include a Key.	Write a Tweet about how to use 4-figure grid references. It must be no more than 140 characters.	Create a collage titled 'Famous IOM' using landmarks, landforms and famous people.	Design a map for a video game you know. You could use an existing map to help you.

Geography Take Away Homework—Risky World



Choose your homework from the menu below:

The Peri-ometer shows the level of difficulty or challenge.



Keep an eye out in the news for a recent earthquake or volcanic activity and write a series of tweets to report on it. Don't forget good #hashtags!	Imagine you are a doctor being sent to work in an earthquake-torn country. Produce a list of essential items you will take with you. Then, write a series of diary entries to describe what you see whilst you are working.	Create a video/TV commercial to let people know what to do if an earthquake or volcano hits.	Build your own earthquake proof city. Make sure it has detailed labels explaining your choice of buildings etc.
Create a collage on volcanoes. Show eruptions and their effects using real-life examples.	Draw or find a map of your local area and highlight all 'safe' areas of ground that you would go to if an earthquake hit.	Design a webpage that could be used to promote tourism in a country recovering from an earthquake.	Design and make your own natural hazard board game with rules.
Make a natural hazard themed playlist that could be played during lessons.	Make an illustrated list of items to be included in an earthquake kit.	Watch a video on YouTube (with the sound down) about a volcanic eruption. Write your own commentary.	Produce a quiz of 10-15 questions (and answers) that we could use to test other student's knowledge.
Draw a colour-coded map of your home, identifying areas that would be safe in an earthquake (green) and those that would be dangerous (red).	Create 5 challenging questions (with answers) to be used to test your classmates.	Create a 'Wordle' about this topic using all the key word and phrases.	4 Pics 1 Word Choose 4 pics that relate to one key word from this topic. Don't forget to provide letters to choose from.

Take Away Homework - Weather & Climate



Choose your homework from the menu below:

The Peri-ometer shows the level of difficulty or challenge.



Use a case study to explain how weather can affect lives. Create at least, an A3 sheet displaying your findings. Be creative!	Produce a world map that shows different types of weather around the world. Include pictures and annotations.	Top Trump cards — create 4 different Top Trump cards (one for each country, four different countries). Include a picture & ratings 1—10 for these categories: average wind speed, average precipitation, average temperature, general weather.	Research and explain using words and pictures what fog is. Then answer the question below: Describe why fog occurs off the coast of California USA.
Research how you might observe and record the weather and then create an information booklet about your findings.	Design a tool that can be used to forecast the weather—include annotations to explain your ideas.	Create an A4 page displaying information about a tropical storm case study.	The school needs a new permanent weather station for students to use. Find one specialist website (not Amazon or eBay) and show the equipment we need to buy, its cost and what it is used for.
Produce accurate drawings of the different cloud formations with labels.	Write a weather forecast (this can be filmed!) for the following week in the UK.	Create a short story that somehow explains the difference between weather and climate.	Take a photo of a cloud that looks like something else. Use a cloud spotting guide to explain what type of cloud it is, how high it was and what you thought it looked like.
Design a poster or leaflet to explain the difference between weather and climate	Create a storyboard that includes all of the different weather elements.	Create a TV advert for a holiday destination that is experiencing good weather due to climate change.	Find a creative way to show 4 different types of weather.



100 Club

July 2018

1 st - £40	Mr S Price	10
2 nd - £25	Mr & Mrs IJJ Watson	57
3 rd - £15	Miss N Boyde	43

August 2018

1 st - £40	Mrs C Bucuris	6
2 nd - £25	Mrs M Walmsley	98
3 rd - £15	Mr & Mrs D Kinrade	80



The RGSA Committee will reconvene for the Annual General Meeting on
Thursday 27th September at 6.30 pm

All parents/carers/interested parties are invited to attend. Many of the outgoing committee will be stepping down this term and a new Chair, Treasurer, Secretary and Press Officer will be needed.

Please feel to contact RGSA on rgsaenquiries@iomcloud.com with any queries or concerns.