

---

RGS Newsletter 2024-25

Issue 1

Wednesday 30<sup>th</sup> October 2024

---



**Headteacher's Message:**

Dear Parents and Carers,

A warm welcome back to all our Ramsey Grammar School students, and in particular to our new students and families. We have had a wonderful start to the academic year, and I thank you as always for your ongoing support.

I am happy to say that all our new students have settled in well and it has been pleasing to see new friendships forming and how well they are adapting to secondary school.

An exciting year is ahead where I have the privilege of being headteacher of such a wonderful school, with a dedicated team of people who are all focused on making your school a fun, safe and engaging place to be.

There have been some changes to the staffing structure this year and some internal changes to strengthen the leadership and extended leadership teams. We are very lucky to have such experienced teaching staff who have a range of diverse teaching knowledge working at Ramsey Grammar, and their expertise and skills are being utilised to their best going forward. We also have a wonderful new Assistant Headteacher, Mr Flynn, who is fully engaged in this role and has been a valuable support to both staff and students. Mr Flynn is an experienced teacher who has been with Ramsey Grammar School for a number of years, previously holding the position of Head of Mathematics. Mrs Corrin is now Safeguarding lead for our school and ensures our staff are kept up to date with vital information to keep our students safe. Mrs Corrin also works directly with students, their families and agencies to ensure that any concerns with student welfare is dealt with confidentially and the student is getting as much support as possible.

There will be a continued focus on attendance this year. It is imperative that children attend 100% of lessons available to them to ensure they receive the best learning opportunities possible. Thank you in advance for your support with ensuring that your children attend school as much as possible.

I hope you enjoy the half term break, and I look forward to starting the second half term with our students refreshed and ready to learn.

Best wishes,

Mrs S Taylor



### Mobile Phone Use In Schools

Over the summer holidays, the Department of Education, Sport & Culture updated their Mobile Phone policy, and from September 2024 students in Secondary schools were not permitted to have their phones on them or use them during the school day.

We requested that our students keep their phones on silent in their school bags until the end of the school day.

Any students using their phone in school during the school day will be requested to hand it over to a member of staff and the phone will be safely placed in the school office for the remainder day, in a sealed bag. The phone can be collected by the student after school at 3.15pm.

We were very grateful for the overwhelming support from parents and carers regarding this new policy.

We are also happy to say that the majority of students have adhered to this new regulation, and we are seeing a lot more communication between students during breaks and lunch times.

As a school, we had to look at ways of adjusting some of our lessons to incorporate this new policy. Ramsey Grammar was in a fortunate position of having plenty of school ipads which our students have access to. We also use school laptops in lessons, and students have access to school laptops in the library. School laptops are also available during lunch time and after school clubs.

### RGS School Planners

The new RGS School Planners that each student has been given are a way for our students to quickly check their timetable, keep on top of any homework deadlines, and to make notes of important dates and information that their form tutors and teachers give them.

Parents and carers frequently gave feedback regarding keeping up to date with work due for lessons, sports fixtures, etc. All this information can now be noted by your child in their Planner. There are also a sections for parents and carers to make any comments or notes for tutors.

These Planners are also a great way for parents and carers to see how their child prepares themselves for learning each day.

There is a Ready To Learn section at the front of the Planner where staff can make a note of students who have not been ready for lessons. We want our students to be in the right mindset and ready for learning when they arrive at each of their lessons.

There are also sections at the back of the Planner for use in lessons such as Science, Maths and English, with lots of useful information for these subjects, as well as maps and health tips.

We have added purple tear-off slips to the back of the Planner, where you can inform us of any appointments such as dentist, doctors, eye, hearing, etc.

Please remember to sign your child's Planner each week, as this lets the form tutors know you are aware of any information which has been added to their Planner.

### RGS School Uniform

The introduction of the new uniform policy in September 2024 requesting school skirts to be a black pleated knee-length skirt has been a great success and our students are looking very smart. The overall presentation of the new uniform is much better this year.

Some students are wearing skater style non-pleated skirts which are not suitable for school and not in keeping with the uniform policy. Likewise, lycra trousers and ribbed trousers are not permitted. Our Uniform Policy can be found on our website and a link to the policy is here [RGS Uniform Policy](#)

Again, we are very lucky to have the support of parents and carers with this change, and many have commented how much better the uniform is looking on our students.

Our students represent Ramsey Grammar School when they are in their uniform and it is rewarding to receive the many positive comments from members of the public on the smart appearance and politeness of our students whilst out and about in our community.

You will see from the below images that the Ramsey Grammar School uniform has taken many forms over the years, from white, to green to grey to yellow!







### Student Attendance

If you are requesting a period of time off for students during the school terms (for example, sporting events or holidays), please can you complete the Student Leave of Absence form from the RGS website:

[RGS Student Leave Request Form](#)

Parents should be aware that absence during Years 10 and 11 (GCSE), and Years 12 and 13 (A Level) is potentially damaging to future grades. As per the DESC Attendance Policy, the Headteacher has the right to refuse absence requests for students who are studying in these year groups.

We are aiming to increase our student attendance over this academic year. Last academic year we were at 88.2% attendance. This year the whole school target is to reach 96% attendance, and we need parental support to reach this. Below are some interesting statistics for attendance.

**90%** attendance = **1/2 day missed** every week!!

**1 school year** at **90%** attendance = **4** whole weeks of lessons **MISSED!!!**

If your child can **improve** their attendance by **1%**, they will see a **5-6%** improvement in **attainment**. (Department for Education and Skills)



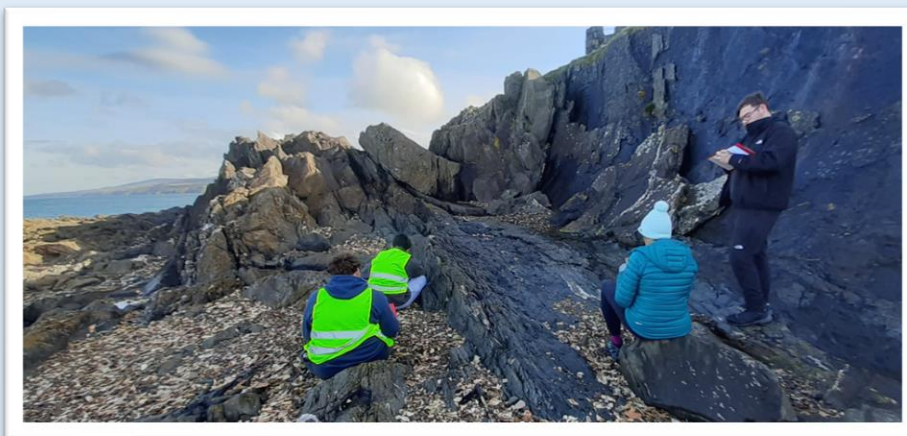
Being 15 minutes late each day, shows that your child will miss 2 weeks of learning in one academic year.

**Geology Field Trip**

On 22<sup>nd</sup> and 23<sup>rd</sup> October, our Geology students ventured out to the west of the Island. Investigating the Peel standstone on the promenade and is this or isn't this the Iapetus Suture at Niarbly?!



Making a field sketch of the turbidite fold below Peel Castle



and the obligatory investigation of Davison's ice cream!!





### Musicians at RGS

Festival Interceltique de Lorient was held in France over the summer holidays, with this years' focus on 'youth'.

There were so many students from the north of the Island who were in attendance - from dancers to singers, from soloists to ensembles. The Manx flag was raised by Daniel Cross and Niamh Milsom from RGS!



Some of our amazing musicians also travelled to the Netherlands with the Manx Youth Orchestra!



RGS Duke of Edinburgh's Award Scheme



It is the time of year where the expedition season comes to an end and we look back at how well our students have done in successfully completing their expedition, making memories with their group, building resilience, working as a team and taking responsibility, ensuring they have the correct equipment, good food whilst out on the tracks and in campsites.

It will be a good time now to look at what they need to do to complete the other three sections for the Bronze and Silver Awards and four sections for the Gold Award. If they can add any outstanding evidence and assessor reports, we will get the award approved and verified.

The new registration process for the Bronze Award (Year 9) is well under way and it is looking like we will have another busy expedition season. The training sessions will commence after the half term break and we will send details out in the first week back regarding times and a plan of what we will be working on.

Silver and Gold registration is also open and we hope to see more registrations completed over the next few weeks.

Behind the scenes we will be checking kit and arranging dates for next year's expeditions, if you happen to come across any RGS expedition kit at home which hasn't been returned after expeditions, if it could be returned as soon as possible so we can ensure everything is check and ready to go for another busy expedition season next year.

We hope you all have a great half term break and the students enjoy a deserved break.

Ramsey DofE Team





### RGS Extra Curricular Clubs

Our amazing staff at Ramsey Grammar have, yet again, gone above and beyond by giving their time to hold before school, lunch time and after school clubs. Please note that these are subject to change, and staff will advise students of any changes in advance.

	Time	Club Name	Room	Staff Member		
<b>Monday</b>						
Before School	08.00 – 08.40	English Homework	201	LBE		
	08.30 – 09.00	Farm Cub	Farm/Rm 155	MAR/RRA		
Lunch	12.45 – 13.15	Book Club (once a ½ term)	201	LBE		
		Social Room	16	IJU		
		Y10 Spanish Club	18	LRO		
		Y11 Biology Support club	3	LCR		
		Art Workshop	270	MHA		
		Maths Club	113	ENI/JLE/MST		
		Y7 Rugby Club	East Field	BER		
		Y8 Hockey Matches	Astro	GBU		
		Weights & Cardio	Gym	CKE/CGU		
		Allotment Club	155	MAR		
		GCSE Composition Time	MC	BBR		
		After School	15.15	Rugby Club – All Years	West Fields	PE Staff
				Chess Club	Library	WKN
				Senior Hockey	Astro	SHS
Y10 Hockey	Astro			SBO		
Y7 & Y8 Basketball	Sports Hall			JLE		
Art Workshop	270			MHA		
KS4 ICT & Comp Sci Support	108			VG/MM		
KS4/5 Maths Club	107			LDE		
Y8 Fixtures	Various			CKE/GBU		
Beekeeping Club	155			MAR/NC		
<b>Tuesday</b>						
Before School	08.30 – 09.00	Farm Club	Farm/Rm 155	MA/RR		
		Practical Holiday Conversational Spanish	16	IJU		
Lunch	12.45 – 13.15	Global French Coursework Clinic	18	LRO		
		Science Catch Up	8	SHA		
		Y12 Biology Support	3	LCR		
		Inter Basketball	Sports Hall	CGU		
		Art Workshop	270	MHA		
		Weights & Cardio	Gym	CKE/CGU		
		After School	15.15	English Club (KS3/4/5)	206	CSP
				Y7 Hockey	Astro	TMO
				Senior Basketball	Sports Hall	CGU/JLE
				Art Workshop	270	MHA
	15.30 – 16.30	IGCSE Y11 Lifesaving	Ramsey Pool	GBU		





**RGS Extra Curricular Clubs**

	Time	Club Name	Room	Staff Member
<b>Wednesday</b>				
Before School	08.00 – 08.40	Lexia KS4	ICT2	CJO
	08.30 – 09.00	Farm Club	Farm/Rm 155	MAR/RRA
Lunch	12.45 – 13.15	English Homework Club	201	LBE
		Lab 9 Computer Room (for work/study)	9	IJU
		Y12 Spanish Club	19	EJI
		Science Catch Up	8	SHA
		String Ensemble	11	RJW
		Y13 Biology Support	3	LCR
		Y10/Y11 IGCSE Support	2	VNE
		Badminton Club – All Years	Sports Hall	GBU
		CV & Weights	Gym	CK, CG, BEY
		Art Workshop	270	MHA
		Maths Club	108	JLE, ENI, CWH
		ICY & Comp Science Support Club – All Years	108	VG
		Science Support	1/2/3	SHA
After School	15.15	Lexia KS3	ICT2	CJO
		The Enthusiasts	11	RJW/BBR
		Y8/Y9 Hockey	Astro	GBU/BEY
		Rugby – All Years	West Field	PE Staff
		Art Workshop	270	MHA
		KS4/KS5 Maths Club	107	LDE
		Farm Club	Farm	MAR
		IGCSE Weight Training	Gym	CKE/TMO
	Time	Club Name	Room	Staff
<b>Thursday</b>				
Before School	08.00 – 08.40	Lexia KS3	ICT2	CJO
	08.30 – 09.00	Farm Club	Farm/155	MAR/RR
Lunch	12.45 – 13.15	Choir	11	RJW
		Warhammer	201	CWH/LBE
		Lab 9 Computer Room (for study/work)	9	IJU
		Science Catch Up	8	SHA
		Small Animal Club	1	VNE
		Y10 Biology Support Club	3	LCR
		Weights & Cardio	Gym	CKE/CGU
		Basketball – All Years	Sports Hall	CGU
		Science Support	1/2/3	SHA
After School	15.15	Lexia KS4	ICT2	CJO
		Y7/Y8/Y9 Handball	Sports Hall	Mick Hegarty
		GCSE Weight Training	Gym	CKE



**RGS Extra Curricular Clubs**

	Time	Club Name	Room	Staff
<b>Friday</b>				
Before School	08.30 – 09.00	Farm Club	Farm/155	MAR/RRA
Lunch	12.45 – 13.15	Crochet Club	207	LMI
		Cross Stitch Club	207	CJO
		Lab 9 Computer Room (for work/study)	9	IJU
		GCSE Spanish Speaking	18	LRO
		Science Catch Up	8	SHA
		Y11 GCSE French	17	RS
		Y12/Y13 Biology Support	3	LCR
		Y7 Rugby Club	East Fields	BER
		Weights & Cardio	Gym	CKE/CGU
		Art Workshop	270	MHA
		Y7 Hockey	Astro	TMO
		Y9 Hockey Matches		BEY
		Switch Club	205	AW
After School	15.15	Girls Football	Asto	GBU
		KS4/KS5 Maths Club	107	LDE
		Farm Club	Farm	MAR

**RGS Art Students**

The Sovereign Art Foundation - Isle of Man Students' Prize 2024

The Art department are very pleased to announce that 6 Ramsey Grammar School Art students have been shortlisted for the Sovereign Art Foundation's Isle of Man Students Prize 2024. The six students who have made it through to the final round are:

- Arsene Ayen (Year 12) - 'A Disorientated Departure'
- Ealish Cook (Year 13 last year) - 'Days of Our Lives'
  - Isobel Callow (Year 12) - 'Lost in the Found'
- Kayleigh Robson (Year 11 last year) - 'Living Colour'
  - Lainie Sharpe (Year 13) - 'Eternal Trails'
- Lewis McGaw (Year 11 last year) - 'The Labyrinth of a New Past'

Should one of our students win, they then go through to the Global Finals. Here, their work would be competing against students from Singapore, India, Portugal, Hong Kong and others.

If you would like to visit the exhibition, it is being held at The Strand Shopping Centre in Douglas, on the first floor (opposite Sports Direct).

**The Finalists Exhibition runs from:**

18th October – 17th November 2024

Mon – Fri 9am to 5.30pm, Sat – 9am to 6pm, Sun – 11am to 5pm



### RGS Updates

#### Visiting the School Sites

A new Department policy was issued to all schools in the last academic term. Any visitor to either the East or West building must now bring photo ID with them. If you have an appointment with a member of staff at the school, please remember to bring your photo ID to show at the reception when you sign in. If you do not have photo ID, please contact the school prior to your meeting on 811110, or by emailing [RGSEnquiries@sch.im](mailto:RGSEnquiries@sch.im)

#### Staff Departures

We said farewell to a long-standing member of staff this term - we wish Sheila Christory all the best and hope she enjoys her well-earned retirement

#### New School Times for 2024-25

<b>08.45</b>	<b>Registration/Assembly (20 mins)</b>
09.05	Lesson 1
09.55	Lesson 2
10.45	Break (20 mins)
11.05	Lesson 3
11.55	Lesson 4
12.45	Lunch (50 mins)
13.35	Lesson 5
14.25	Lesson 6
15.15	End of school day

New school **bus timetable** for September 2024 is attached below (pages 12-14)

#### Dates for your Diary:

Saturday 2 <sup>nd</sup> November:	Ramsey Fireworks – RGS Band “The Enthusiasts” will be performing 6pm - 6.35pm next to Costa
Monday 4 <sup>th</sup> November:	Start of term
Tuesday 5 <sup>th</sup> November:	Y10 Army Careers Day at RGS
Thursday 7 <sup>th</sup> November:	Y10 Employment & Skills Fair at UCM
Monday 11 <sup>th</sup> November:	Sixth Form Open Day at UCM
Monday 2 <sup>nd</sup> December:	Y11 and Y13 Mock Exams Start
Wednesday 18 <sup>th</sup> December:	RGS Carol Service at St Paul’s Church
Friday 20 <sup>th</sup> December:	Last day of term for 2024





**RGS Bus Timetables – Douglas via Onchan and Laxey**

**Service 3**



Douglas & Onchan - Ramsey Grammar School

**AM**

Mondays to Fridays (School days Only)

Douglas, Lord Street stop D	0740
Onchan, Manx Arms	0755
Baldrine, Methodist Hall	0800
Ballacannell	0803
Fairy Cottage	0804
Laxey, MER shelter	0808
Laxey, Ard Reayrt	0810
Glen Mona, Ballagorry Drive	0818
Ramsey Grammar School	0834

Ramsey Grammar School - Onchan & Douglas

**PM**

Mondays to Fridays (School Days only)

Ramsey Grammar School	1520	---
<i>East Building bus facility</i>		
Ramsey Bus Station	---	1540
Glen Mona, church hall	1537	1553
Laxey, opposite Ard Reayrt	1545	1601
Laxey, MER shelter	1547	1603
Fairy Cottage	1551	1607
Baldrine, layby	1555	1611
Onchan, opposite Manx Arms	1601	1617
Douglas, Lord Street	1616	1632

Service 3 route	AM	Service 3 route	PM
Douglas, Lord Street		Ramsey	
Rosemount		Glen Mona	
St Ninians		Minorca	
Onchan		Laxey	
Baldrine		Fairy Cottage	
Fairy Cottage		Baldrine	
Laxey		Onchan	
Minorca		St Ninians	
Glen Mona		Rosemount	
Ramsey Grammar School		Douglas, Lord Street	

from September 2024

**Service 3b**



Laxey & Ballaragh - Ramsey Grammar School

**AM**

Mondays to Fridays (School days Only)

Laxey, MER shelter	0807
Laxey, Ard Reayrt	0809
Minorca	0811
Ballaragh Village	0813
Glen Mona, Ballagorry Drive	0818
Ramsey Grammar School	0835

Ramsey Grammar School - Ballaragh & Laxey

**PM**

Mondays to Fridays (School Days only)

Ramsey Grammar School	1518
<i>East Building bus facility</i>	
Dhoon Glen, café	1536
Ballaragh Village	1540
Laxey, opposite Ard Reayrt	1544
Laxey, MER shelter	1546

Service 3b route	AM	Service 3b route	PM
Laxey		Ramsey Grammar School	
Minorca		Dhoon Glen	
Ballaragh		Ballaragh	
Glen Mona		Laxey	
Ramsey Grammar School		continues to Douglas	

from September 2024



**RGS Bus Timetables – Peel and Maughold**

**Service 5/6a**



Peel - Ramsey Grammar School

**AM**

Mondays to Fridays (School days Only)

<i>arrives from Douglas</i>	
Peel Town Hall	0755
Kirk Michael, Station Road	0809
Ballaugh, opposite Raven	0815
Sulby Village, shelter	0822
Ramsey Grammar School	0828
<i>sets down at East Building - no stop at West Building</i>	

Ramsey Grammar School - Peel

**PM**

Mondays to Fridays (School Days only)

Ramsey Grammar School	1520
<i>East Building bus facility</i>	
Sulby Village	1528
Ballaugh, Raven	1536
Kirk Michael, school	1544
Peel Town Hall	1559
<i>continues to Douglas</i>	

Service 6a route	AM	Service 5 route	PM
Peel Town Hall		Ramsey Grammar School	
Knocksharry		Lezayre	
Kirk Michael		Sulby	
Ballaugh		Ballaugh	
Sulby		Kirk Michael	
Lezayre		Knocksharry	
Ramsey Grammar School		Peel Town Hall	

**Service 16**



Maughold - Ramsey Grammar School

**AM**

Mondays to Fridays (School days Only)

Port-e-Vullen	0809
Maughold Village	0813
Ballajora	0816
Dreemskerry	0817
Ramsey Grammar School	0832

Ramsey Grammar School - Maughold

**PM**

Mondays to Fridays (School Days only)

Ramsey Bus Station, shelter	1600
Port-e-Vullen	1609
Maughold Village	1613
Ballajora	1616
Dreemskerry	1617

Service 16 route	AM	Service 16 route	PM
Ramsey Bus Station		Ramsey Bus Station	
Port-e-Vullen		Port-e-Vullen	
Maughold Village		Maughold Village	
Ballajora		Ballajora	
Dreemskerry		Dreemskerry	
Folieu, Ballure Holiday Homes		Ramsey Bus Station	
Ramsey Bus Station			



RGS Bus Timetables – Jurby and Bride & Andreas

**Service 19c**



Jurby - Ramsey Grammar School

**AM**

Mondays to Fridays (School days Only)

Ballaugh Cronk	0755
Jurby West, crossroads	0757
Jurby, Bretney shelter	0811
Jurby, Threshold shelter	0816
St Judes Church	0822
Kings Reach, shelter	0827
Ramsey Grammar School	0833

Ramsey Grammar School - Jurby

**PM**

Mondays to Fridays (School Days only)

Ramsey Grammar School	1523
East Building bus facility	
Jurby Road, Ash Grove	1528
St Judes	1533
Jurby, Bretney shelter	1539
Jurby, Threshold shelter	1542
Ballaugh Cronk	1548
Jurby West, crossroads	1551

**Service 20/a**



Bride & Andreas - Ramsey Grammar School

**AM**

Mondays to Fridays (School days Only)

Dogmills	0756	(Service 20a)
Bride, Rectory	0801	
Smeale	0806	
Andreas, school shelter	0815	
Regaby crossroads	0820	
Ramsey Grammar School	0831	

Ramsey Grammar School - Andreas & Bride

**PM**

Mondays to Fridays (School Days only)

Ramsey Grammar School	1530	(Service 20)
East Building bus facility		
Regaby crossroads	1540	
Andreas, hairdressers	1547	
Smeale	1553	
Bride, cemetery entrance	1559	
Dogmills	1603	

Service 19c route	AM	Service 19c route	PM
Ballaugh Cronk		Ramsey Grammar School	
Jurby West		Jurby Road	
Summerhill Road		St Judes	
Jurby, Bretney		Summerhill Road	
Jurby, Threshold		Jurby, Bretney	
Sandygate		Jurby, Threshold	
St Judes		Sandygate	
Jurby Road		Ballaugh Cronk	
Ramsey Grammar School		Jurby West	

Service 20a route	AM	Service 20 route	PM
Dogmills		Ramsey Grammar School	
Bride		Dhour	
Coast Road		Regaby	
Smeale		Andreas	
Andreas		Smeale	
Regaby		Coast Road	
Dhour		Bride	
Ramsey Grammar School		Dogmills	