

Subject
Geography
Starting Geography & Skills

Year and Term
7 Autumn

Time of Assessment
Wb 30th Oct

Knowledge and Skills to be Assessed:
Map Skills including

- Symbols
- Direction
- Contours and spot heights
- Measuring distances using a scale
- 4 and 6 figure grid references
- Latitude and Longitude
- Physical and Human Geography of the IOM
- Interpreting Photos and Graph
- Describing relief
- Using an Atlas



Resources to help Revision:

BBC Bitesize

<https://www.bbc.co.uk/bitesize>

YouTube – OS map skills

https://www.youtube.com/playlist?list=PLJp4yCtYcXprknSY_FAUpWG5ZbDwHmfY7

IOM Maps

Emerging	Developing	Secure	Mastering	Extending
Students show a basic knowledge of Map skills. Students demonstrate an understanding of less than approximately 25% of the content.	Students show a partial knowledge of Map skills. Students demonstrate an understanding of between approximately 25% and 40% of the content.	Students show a secure knowledge of Map skills. Students demonstrate an understanding of between approximately 40% and 60% of the content.	Students show a very good knowledge of Map skills. Students demonstrate an understanding of between approximately 60% and 75% of the content.	Students show a comprehensive knowledge of Map skills. Students demonstrate an understanding of approximately more than 75% of the content.

Subject
Natural Environments
Tropical Rainforests and Dessert

Year and Term

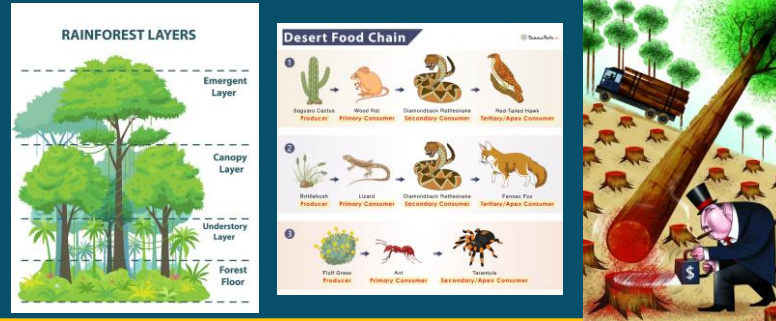
Year 7 Term 2

Time of Assessment

March 2025

Knowledge to be Assessed:

Location of TRF and Desert
 Climate Graphs
 Layers of the Rainforest
 TRF Plant and Animal Adaptions
 Causes and impacts of deforestation
 Desert Plant and Animal Adaptions
 Desert Tourism
 Desert Survival



Skills to be assessed

Describing distribution
 Interpreting graphs
 Recognising differences
 Map reading
 Annotating images
 Atlas skills

Resources to help Revision:

BBC Bitesize

<https://www.bbc.co.uk/bitesize/articles/zppthcw>

Seneca learning

<https://senecalearning.com/en-GB/revision-notes/ks3/geography/national-curriculum/17-1-4-overview-of-tropical-rainforests>

Emerging	Developing	Secure	Mastery	Extending
<p>Students show a basic knowledge of the topics. Students demonstrate an understanding of less than approximately 25% of the content.</p>	<p>Students show a partial knowledge of the topics. Students demonstrate an understanding of between approximately 25% and 40% of the content.</p>	<p>Students show a secure knowledge of the topics. Students demonstrate an understanding of between approximately 40% and 60% of the content.</p>	<p>Students show a very good knowledge of the topics. Students demonstrate an understanding of between approximately 60% and 75% of the content.</p>	<p>Students show a comprehensive knowledge of the topics. Students demonstrate an understanding of approximately more than 75% of the content.</p>